

August 14, 2017

Dear Sir:

Attached is Addendum No. 1 dated August 14, 2017 to the Specifications for The Manitoba Water Services Board Contract No. M.W.S.B. 1385, Town of Neepawa, Mountain Avenue Watermain Extension. Please verify receipt of this Addendum for our records by fax to (204) 726-6290.



**ACKNOWLEDGEMENT OF RECEIPT OF ALL ADDENDUMS
MUST BE INCLUDED IN THE TENDER SUBMISSION.**

Failure to include acknowledgement shall cause the tender to be rejected. If Tender is submitted before Addendum is issued, the Board will accept a faxed acknowledgement prior to the tender closing.

Yours truly,

R. Lytle
Construction Manager

The Manitoba Water Services Board
Unit #1A - 2010 Currie Blvd.
Brandon, MB R7B 4E7

Dear Sir:

We have received Addendum No. 1 dated August 14, 2017 to the Specifications for The Manitoba Water Services Board Contract No. M.W.S.B. 1385, Town of Neepawa, Mountain Avenue Watermain Extension.

Yours truly,

Company

Per

THE MANITOBA WATER SERVICES BOARD
CONTRACT NO. M.W.S.B. 1385
TOWN OF NEEPAWA
MOUNTAIN AVENUE WATERMAIN EXTENSION
ADDENDUM NO. 1

To the tender documents for the Town of Neepawa, Mountain Avenue Watermain Extension

August 14, 2017

PRECEDENCE

This addendum forms an integral part of the specifications describing all aspects of the work and is to be read in conjunction therewith.

SCOPE

The purpose of this addendum is to amend the following sections of the Tender Documents:

1.1 REVISED MWSB FORM 3B

- .1 Use the revised Schedule of Prices included with this addendum.

1.2 REVISED CP RAIL CROSSING

- .1 See attached drawing 4945-00-C-741, revision 1, dated August 9, 2017.
 - .1 Revise rail casing size to 275 mm diameter.
 - .2 Revise carrier pipe size to 200 mm diameter.
 - .3 Revise gate valves at stations 0+963.5 and 1+120 to 200 mm diameter.

1.3 CLEARING & GRUBBING

- .1 Clarification:
 - .1 Contractor is responsible for any clearing, grubbing and disposal of material required to allow installation of the pipeline.

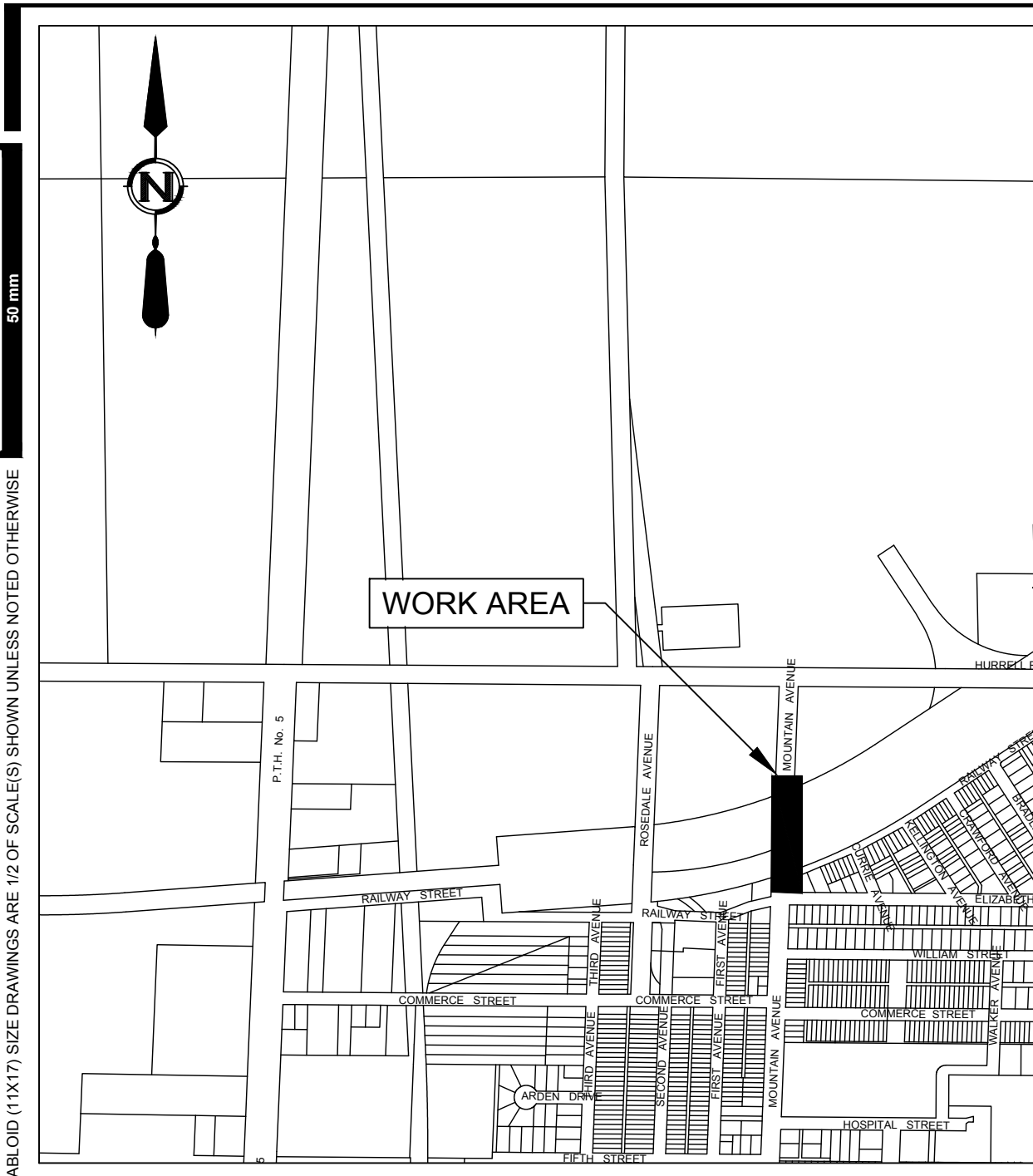
END OF ADDENDUM #1

SCHEDULE OF PRICES - PROJECT NO. MWSB 1385

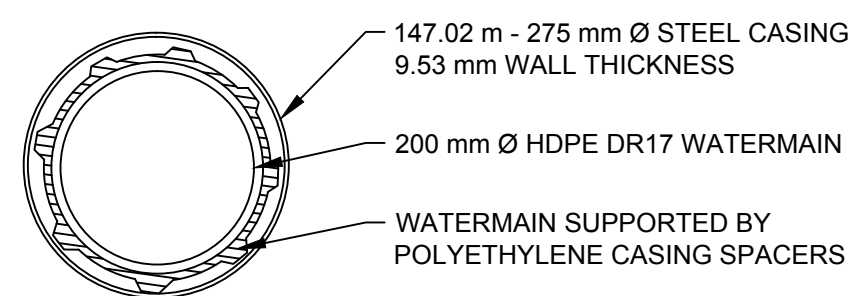
Item No.	Description	Approx. Quantity	Unit	Unit Price \$0.00	Total Price \$0.00
1.0	<u>WATERMAIN EXTENSION</u>				
1.1	<u>Pressure Pipeline</u>				
1.1.1	150 mm diameter HDPE DR17 Pipe	30	Lin. m.		
1.1.2	200 mm diameter HDPE DR17 Pipe	160	Lin. m.		
1.1.3	300 mm diameter HDPE DR17 Pipe	990	Lin. m.		
1.2	<u>Crossings</u>				
1.2.1	CP Rail (steel encased)	1	Each		
1.2.2	Utilities (gas, fibre optic, phone, etc)	4	Each		
1.3	<u>Gate Valve</u>				
1.3.1	150 mm	1	Each		
1.3.2	200 mm	2	Each		
1.3.3	300 mm	1	Each		
1.4	<u>Flushout Assemblies</u>				
1.4.1	300 mm End of Line	1	Each		
1.5	<u>Water Services</u>				
1.5.1	38 mm Service Water Pipe	41	Lin. m.		
1.5.2	300 mm x 38 mm Service Saddle	3	Each		
1.5.3	38 mm Corporation and Curb Stop	3	Each		
1.6	<u>Fire Hydrant Assemblies</u>				
1.6.1	Hydrant Assembly	7	Each		
1.7	<u>Connections</u>				
1.7.1	Rosedale Avenue	1	Each		
1.7.2	Mountain Avenue	1	Each		
	EXTRA WORK ALLOWANCE				\$50,000.00
				Sub-total	
	*PST must be included in unit prices.			GST (5%)	
			TOTAL TENDER PRICE		

Name of Bidder

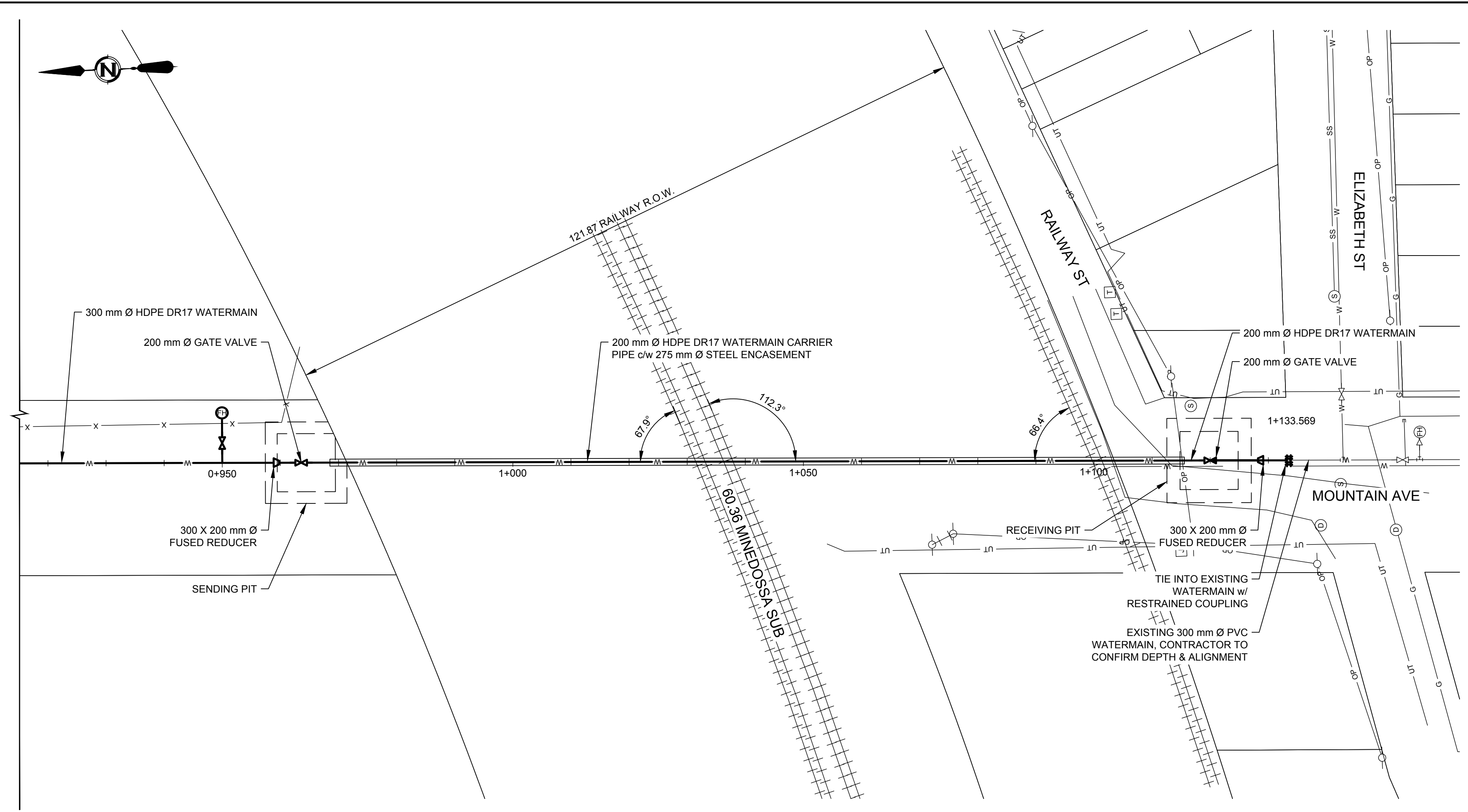
ORIGINAL SEALED BY:
 K. ANDERSON, P. ENG.
 DATED: AUGUST 9, 2017



1 PLAN
 SITE KEY 1:10000



2 DETAIL
 PIPE END VIEW NTS



3 PLAN
 RAILWAY CROSSING 1:500

- NOTES:**
- DECIMALIZED NUMBERS INDICATE METERS AND WHOLE NUMBERS INDICATE MILLIMETERS, UNLESS OTHERWISE NOTED.
 - INSTALLATION AND MAINTENANCE TO BE IN ACCORDANCE WITH TC E-10 AND C.P.R. SPECIFICATION NO. SP-TS-2-39.
 - METHOD OF INSTALLATION:
 - DIRECTIONAL DRILLING; OR
 - JACK & BORE - AUGER HEAD COMPLETELY INSIDE PIPE WITH A MINIMUM 2x DIAMETER WIDTH FROM FRONT END (2xØ SOIL PLUG).
 - CONTRACTOR SHALL SELECT A REAMER/AUGER DIAMETER THAT MINIMIZES THE ANNULAR SPACE BETWEEN THE CASING AND BOREHOLE.
 - THERE SHALL BE NO EXCAVATION WITHIN C.P.R. RIGHT OF WAY.
 - DESIGN LOADING SHALL BE COOPER E80 AS PER TC E-10, MIN.
 - WARNING MARKERS SHALL BE INSTALLED ON EACH SIDE OF THE RAILWAY R.O.W. AT THE END OF THE ENCASMENT PIPE.
 - EXISTING UTILITY LOCATIONS SHOWN ARE TO BE VERIFIED WITH THE UTILITY COMPANY PRIOR TO EXCAVATION.
 - SUPPLY PIPELINE TO HAVE MINIMUM OF 1.68 m COVER BELOW MAIN LINE TRACKS UNLESS OTHERWISE NOTED.
 - EXCAVATION SLOPES TO BE DETERMINED BY SOIL CONDITIONS AND APPROVED BY ENGINEER PRIOR TO CONSTRUCTION.

CASING PIPE SPECIFICATION:

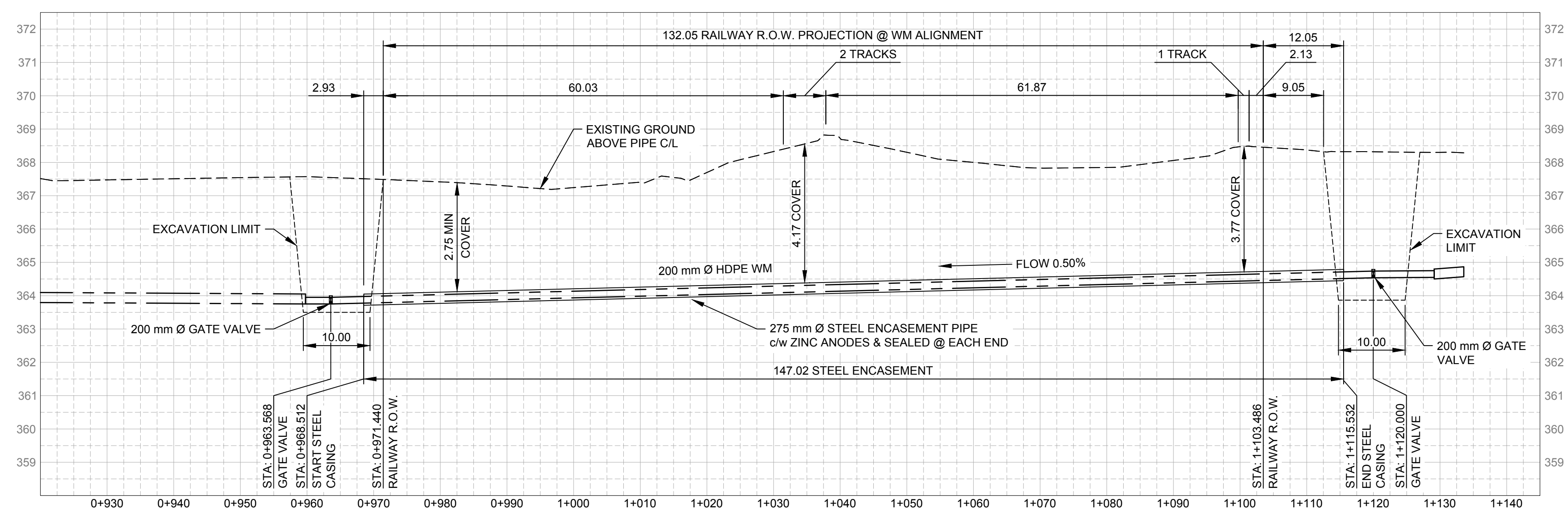
OUTSIDE DIAMETER:	288.45 mm
INSIDE DIAMETER:	279.4 mm
WALL THICKNESS:	9.53 mm
PIPE SPECIFICATION:	STD
LENGTH:	147.02 m
MATERIAL:	STEEL
MIN YIELD STRENGTH:	241 MPa
PROTECTION:	2-10 kg ZINC ANODES

CARRIER PIPE SPECIFICATION:

MATERIAL:	HDPE
CONTENTS:	POTABLE WATER
OUTSIDE / INSIDE DIAMETER:	219.2 mm / 191.8 mm
WALL THICKNESS:	12.98 mm
SPEC:	DR17
OPERATING / MAX PRESSURE:	4.14 MPa / 862 kPa
PROTECTION:	NIL

PIPE SPACER SPECIFICATION:

RUNNER HEIGHT:	16.5 mm
No. RUNNERS PER SPACER:	5
MIN. INSULATOR WIDTH:	130 mm
TENSILE STRENGTH (ASTM D-638, D-651):	22 MPa MIN.
DISTANCE BETWEEN SPACERS:	2.0 m - 2.5 m
MATERIAL:	POLYETHYLENE



4 PROFILE
 RAILWAY CROSSING 1:500 H, 1:100 V

REV	DATE	DESIGN	DRAWN	DESCRIPTION
1	2017AUG09	K. ANDERSON	D. PASTORIN	ADDENDUM #1
0	2017JUL20	K. ANDERSON	T. DYCHKO	ISSUED FOR TENDER



TOWN OF NEEPAWA
 MOUNTAIN AVENUE
 WATERMAIN EXTENSION
 MWBS #: 1385
 20174945-00

SCALE: AS SHOWN

CIVIL
 PLAN & PROFILE
 RAILWAY CROSSING

DRAWING	REVISION	SHEET
4945-00-C-741	1	4 / 4